

Intermittent Nelaton Catheter

INSTRUCTIONS FOR USE

PLEASE READ CAREFULLY

GENERAL INFORMATION

SensaCath® Intermittent Nelaton Catheter has a sterile and activated hydrophilic surface. It is ready for insertion into the urethra without any delay. The catheter is stored in its own sterile water in an aluminium pouch.

SensaCath® Intermittent Nelaton Catheter is a single use and latex free catheter which is made of phthalate free PVC (Polyvinyl Chloride) and coated with cross-linked PVP (Polyvinylpyrrolidone).

The surface layer of the catheter has a hydrophilic coating which binds with sterile water, creating a ready to use smooth slippery coating on the catheter.

SensaCath® Intermittent Nelaton Catheter is used for bladder drainage with individuals who have bladder dysfunction. It is for single use only and must be discarded after use.

STORAGE

It should be stored in a cool and dry environment, avoiding direct sunlight.

STERILISATION

Sterilised with E-beam Irradiation.

WARNINGS

Intermittent self-catheterisation is a common procedure, however, you should always seek guidance from your healthcare professional and carefully read the instructions before use. Intermittent self-catheterisation using the **SensaCath® Intermittent Nelaton Catheter** should only be carried out under medical advice e.g. physician/nurse – and in accordance with the instructions given.

The sterile water in the catheter is harmless. Nevertheless, do not use the catheter if the package is open or torn, or has expired.

It is single use only. Reuse, reprocessing, cleaning, disinfection or resterilisation may compromise product characteristics which in turn may create a potential risk to the user. Catheterisation should be completed as soon as possible after the packaging is opened and the catheter should be removed once the bladder is empty.

User should be trained in the proper use of the **SensaCath® Intermittent Nelaton Catheter** which is ready to use. The user manual should be read carefully before applying.

Clinisupplies accepts no liability or loss that may arise if this product is not used entirely according to the company's recommendations.

COMPLICATIONS

- Urinary tract infection
- Bleeding linked to urethral trauma or infection
- Epididymitis, Urethritis, urethral stricture and bladder stones

SIDE EFFECTS

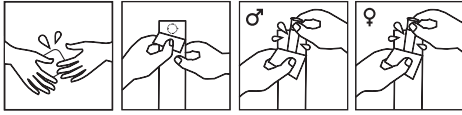
- Urinary tract infection/Sepsis
- Burning and/or pain in urethra
- Urethral bleeding
- Urinary system stone disease

INSTRUCTION FOR USE

SensaCath® Intermittent Nelaton Catheter is ready to use as soon as you open the packaging, so ensure you are ready to proceed with the catheterisation straight after opening it.

1. Begin by washing your hands and the area around the urethral orifice. It is important to avoid transferring bacteria onto the catheter from your hands or surrounding areas.

2. Attach the catheter package to a smooth surface using the sticky peel.
3. Peel the package open and the catheter can be removed and used immediately. Please take care not to drop or contaminate the catheter.



4. Preparation for insertion of the catheter:

a. Female:

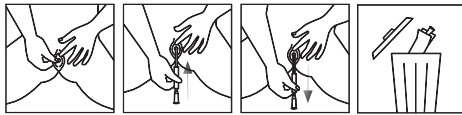
With one hand, part your labia to expose the urethral orifice.

b. Male:

Straighten out your urethra by lifting your penis with one hand. Avoid squeezing the penis, as this may make insertion of the catheter more difficult.

5. a. Female:

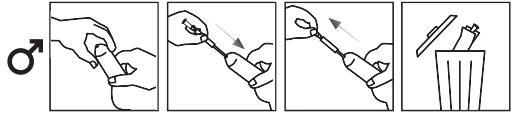
Without touching the clear catheter, use the **non-touch slider** or end connector to gently insert the catheter into the urethra approximately 2cm at a time.



b. Male:

Without touching the clear catheter, use the **non-touch slider** to gently insert the catheter into the urethra approximately 2cm at a time.

Just before the catheter reaches the bladder you may feel a slight resistance due to the sphincter.



6. Continue to insert the catheter into the urethra until urine starts to flow.

Note: The catheter can be connected to a urine drainage bag if there is no toilet nearby.

7. When the urine stops flowing, ease out the catheter 2 to 3cm. If the urine restarts, wait a few seconds before easing out the catheter another 1 to 2cm. Once the bladder is completely empty, remove the catheter slowly and dispose of it safely.

PACKAGING

Quantity per box: 30 pcs

STERILE R	Sterilised using irradiation	i	Consult instructions for use
	Do not re-use	REF	Catalogue number
	Do not re-sterilize	LOT	Batch code
	This device is free from natural latex		Date of manufacture
	Bis(2-ethylhexyl) phthalate (DEHP) free		Use by date
	Keep dry		Manufacturer
	Keep away from sunlight	MD	Medical device
	Do not use if package is damaged	UDI	Unique device identifier
	Caution		Distributor
	Single sterile barrier system		European conformity mark
EC REP	Authorized representative in the European Community/European Union		

SensaCath® is a registered trademark of Clinisupplies Ltd.



Clinisupplies

0123

Clinisupplies Ltd, 1 Blackmoor Lane, Croxley Park, Watford, Hertfordshire WD18 8GA, UK
Tel: 0208 863 4168 Email: info@clinisupplies.co.uk www.clinisupplies.co.uk

Jamjoom Fullcare Corporation, No.6 Dongshan Road, 312000 Shaoxing, Zhejiang, PEOPLE'S REPUBLIC OF CHINA

EC **REP** SHANGHAI INTERNATIONAL HOLDING CORP. GMBH (EUROPE)
Eiffestraße 80, 20537 Hamburg, GERMANY